



Print Post Approved 381624/02070

SURFACE
MAIL

POSTAGE
PAID
AUSTRALIA

If undelivered return to Life FM
PO Box 1378, Sale Vic 3853

Issue 71

Gippsland Christian Broadcasters Inc.

February 11

ABN# 81 696 303 972

www.lifefm.com.au

Sale Office Hours:

- Monday 9:30am - 5pm
 - Tues & Wed 9:30am - 12:30pm
 - Thurs & Fri 2-5pm
- PH: 03 5143 0355
Feedback: 03 5143 0357
Fax: 03 5143 0388

Traralgon Office Hours

Tuesday - Thursday
9:30am - 3:30pm
PH: 03 5174 0147

**Christian Women's Luncheon
Saturday 19th March 12.30pm**



Venue: The Morwell Club,
136 Helen St, Morwell
Bookings: (03) 5143 0355
RSVP: 9th March

Sale
204 Raymond St
(PO Box 1378)
Sale 3853
gippsland@lifefm.com.au

Traralgon
Christian Bookworld
Shop 3 / 27 Princes St
Traralgon 3844

Christian Women's Luncheon - Sat 19th March



For Such A Time As This

Issue 71

Feb 2011

Trusting in Jesus

"In all thy ways acknowledge him, and he shall direct thy paths." Proverbs 3:6

There's so much that has happened since we started broadcasting in October 2003. If you would like to hear first-hand some of the exciting stories of how God has moved to bring this radio station to Gippsland - give me a call on 5143 0355 or email deb@lifefm.com.au and we'll make arrangements for a visit to your club, group, school or church.

We're also on the look-out for new high-profile spots to park our trailer. If you have a paddock close to a main highway or know of someone who does give us a call. We also have a few large signs that could be put up somewhere suitable.



We are so thankful for all that we have been blessed with - even though it isn't an easy road, it's such a joy to know we are spreading the hope of Jesus across our region.

Our thoughts and prayers are with so many who have been devastated by the floods, cyclones, fires and the civil unrest we are witnessing in our country and overseas. Now, more than ever, we need to lean on the everlasting arms of our Lord and Saviour.

Deb

Summer Team News



The many faces of "our Randell"! While most people spend their spare time relaxing, working around the home or enjoying a hobby, Life FM's Randell Green trains with the Army Reserve. Sometimes he gets to carry the radio on top of all his other gear as they trudge through the bush (left), or he's called up to assist with flood preparation (right) - And this is fun? The REAL fun is at Life FM (middle) where RG keeps us entertained with his wit and wisdom.



Philip likes to wear his undies on the outside (at Beach Mission) - super hero style! Phil is our super-hero keeping things running behind the scenes. He's a whiz on the computers!



...meanwhile ...Deb took time off to get 2 new knees! Thanks to modern technology she can now work from home - until she can tackle our steps again AND she's been blessed with a few months with her mum visiting during recovery!



..and Yvonne (right) and David (left) have kept things humming at the office - that's TEAM WORK!



GCB Board 2011

For the first time since 2005 we have a full Board! Praise God! This is a huge answer to prayer. The new Board has selected their preferred portfolios and is keen to get into action. Please pray for this new team as they tackle new legislation relating to Governance and as they continue to work on the strategic direction of Gippsland Christian Broadcasters Inc. More information on lifefm.com.au/aboutus



Rev. Heather Toms - President

Heather leads the Wednesday Prayer session for Life FM which has been meeting since 1999 and Chairs the Prayer and Doctrinal Balance portfolios.



Michael Rowell - VP

Michael assists on the Promotions portfolio and will be mentored as Vice President this year. He is Director of Gippsland Finance Group



Clinton Tepper

Clinton has been on the Life FM Board since the 2009 AGM and Chairs the Promotions and assists with Licence Renewal portfolios.



Malcolm McKenzie

Malcolm is Regional Manager for CFA Gippsland and brings a wealth of management experience to the Board.

He Chairs the Rules and will assist with the Licence Renewal portfolios.

Ps. Lynne Heath

Lynne and her husband Brian are pastors of the Sale City Church.

They have been a keen supporters of Life FM from the beginning and organised the Dessert Night in 2003 that saw a HUGE move by God to get the station started. Read the story on the web News archive JULY (2) 2003.



Cameron Rash - Treasurer

Cameron has been on the Board since 2003 and Chairs the Public Fund portfolio. He is a director of Alkimia Financial Pty Ltd.



Joy Churchill - Minute Sec.

Joy takes on the new role of Minute Secretary (part of the new Legislative changes to Incorporated Associations). She also Chairs the Fundraising portfolio.



Brett Ipsen

Brett has a heart to see our Christian radio continue to be available for everyone. He serves on the Promotions portfolio.



Bev Lade

Bev is a member of CWCI Gippsland Convention Committee. She has a passion to see Life FM continue to serve Gippsland and assists on the Fundraising portfolio.



Deb Bye - Secretary

Deb was appointed as Life FM's 1st Station Manager in 2003. Under the new legislation CEO's take on the role of Assoc. Secretary and Public Officer. Deb also chairs the Licence Renewal portfolio and assist on the Rules portfolio.

A Note From The Treasurer

Last year we told you about the grave financial state of Life FM. Many responded to that call and for that we give thanks to God!

In the last few months we have had only a few new members sign up, and some existing members have not yet renewed their memberships.

At the time of writing this we have 341 CURRENT members and 41 overdue for renewal. It is vitally important that we maintain our membership numbers for a number of reasons, mainly;

1. We need the revenue that comes from membership fees. This is YOUR radio station – you can support it and keep it going as a witness and outreach in Gippsland by maintaining your membership;
2. Our licence is reviewed by the Australian Communications and Media Authority (ACMA) every 5 years – having a strong and growing membership base is one way of showing ACMA there is interest in and support for Life FM.

Many people across Gippsland and beyond have been very generous with their tax deductible donations. However our last two appeals have fallen well short of the targets. We're still only barely meeting our ongoing costs.

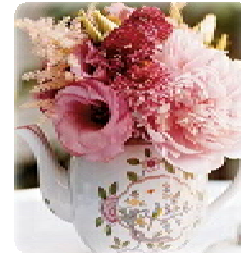
If you want local Christian Radio to continue we urge you to get involved. Here are some suggestions;

- Suggest to your Minister that March be Life FM Month at your church and take up special donations;
- Encourage family and friends to sign up as members (and make sure you renew your own membership!);
- Talk to people you know who run a business to encourage them to take out a sponsorship;
- Sign up as a Life FM Ministry Mate (see page 9);
- Let us know of high-profile (but low cost!) places where we can erect signage or park the Life FM trailer;
- Organise a fund-raiser – every little bit helps;
- Get actively involved as a volunteer;
- Pray for those involved on the ground.

Please, please, please don't let this challenge be answered by someone else. If you think Life FM has anything to offer the community then we urge you to act now, before it's too late.

Cameron Rash

Fundraisers



Christian Women's Luncheon

Come along and enjoy a beautiful lunch and meet with other Christian women in our community.

Station Manager Deb Bye will speak about Life FM's vision, purpose and programs and local guest artist Liz Loria will sing for us. Help to keep local Christian Radio on air in Gippsland and enjoy yourself at the same time!

Saturday 19th March 12.30pm

Venue: The Morwell Club, 136 Helen St, Morwell

Bookings: Phone: (03) 5143 0355 - RSVP: 9th March, 2011

Cost \$25 regular, \$20 concession

RITCHIES COMMUNITY BENEFITS

Are you supporting Life FM through Ritchie's IGA Supermarkets?

If not sign up for Life FM and every time you buy groceries Life FM BENEFITS! From Aug 2002 to Jan 2011 we have received \$4498.34!

It's slow but every cent helps keep us broadcasting.



DATE CLAIMER

There will be a sausage sizzle at Bunnings in Morwell Sat 23rd July 9am - 4pm.

More info soon.